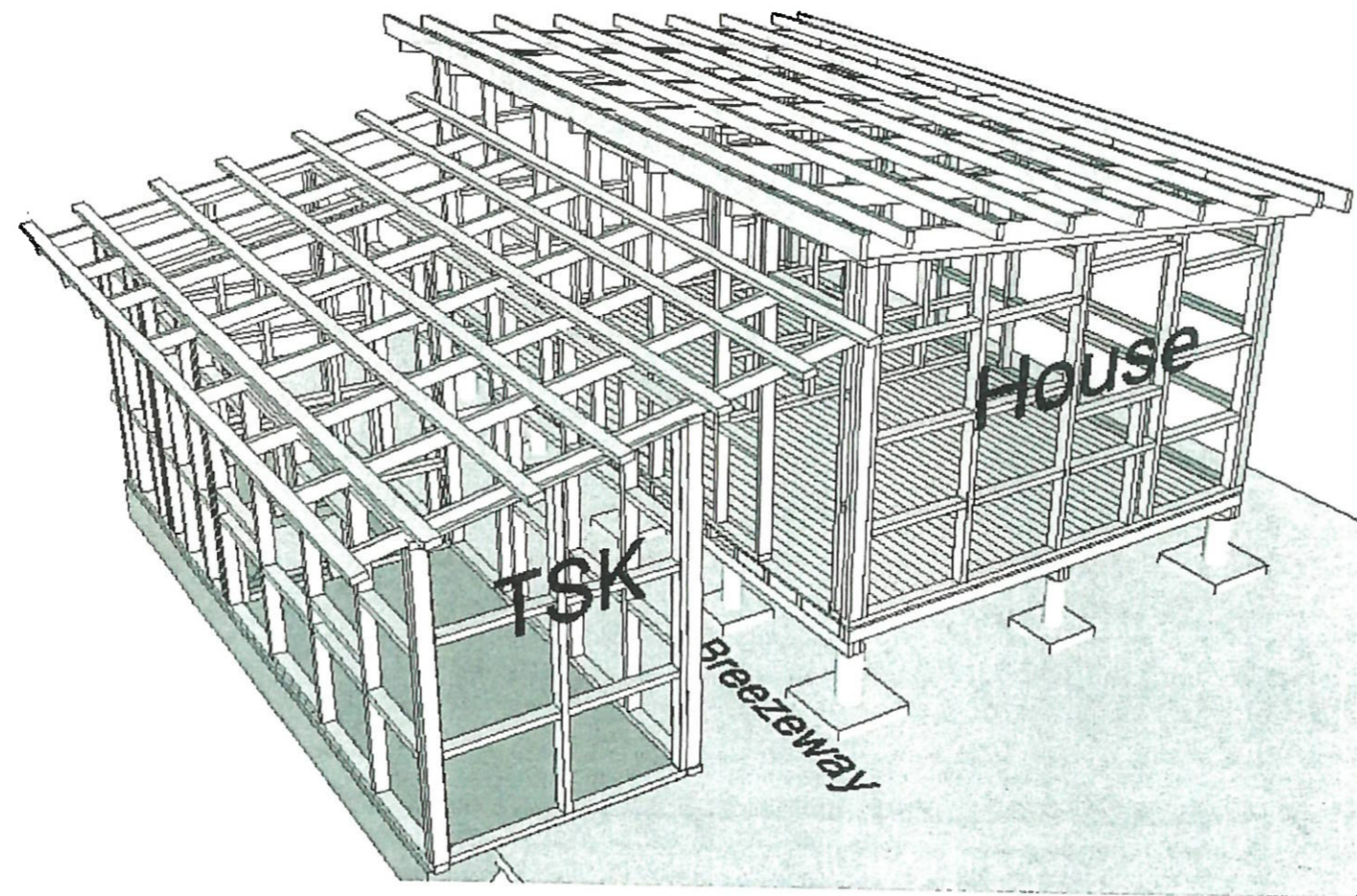


# Ministry of Housing & Community Development



Engineering Drawing  
Two Bedroom (Weather Board Exterior) Model House

August, 2020



**1. GENERAL**

THESE DRAWINGS SHALL BE READ IN CONJUNCTION WITH THE SPECIFICATIONS AND SHALL BE KEPT ON SITE AT ALL TIMES

**2. ABBREVIATIONS**

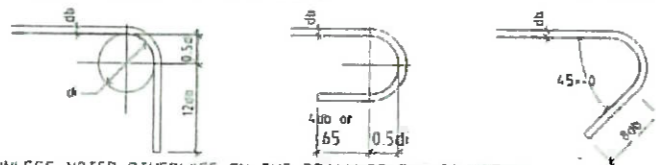
DG- HOT DIPPED GALVANIZED UB- UNIVERSAL BEAM UC- UNIVERSAL COLUMN PFC- PARALLEL FLANGE CHANNEL UND- UNLESS NOTED OTHERWISE	GALV- GALVANIZED MS - GRADE 300 MILD STEEL R- GRADE 300 PLAIN ROUND BAR HR- GRADE 430 PLAIN ROUND BAR XR- GRADE 500 PLAIN ROUND BAR D- GRADE 300 DEFORMED BAR HD- GRADE 430 DEFORMED BAR XD- GRADE 500 DEFORMED BAR C- COVER TO MAIN STEEL NTS- NOT TO SCALE SS- GRADE 316 STAINLESS STEEL SHS- SQUARE HOLLOW SECTION RHS- RECTANGULAR HOLLOW SECTION CHS- CIRCULAR HOLLOW SECTION EA- EQUAL ANGLE UA- UNEQUAL ANGLE
--	---

**3. DIMENSIONS / DATUM**

ALL DIMENSIONS SHALL BE VERIFIED ON SITE BY THE CONTRACTOR BEFORE COMMENCING WORK REFERENCE DATUM TO ALL BUILDING LEVELS IS IISL UND

**4. REINFORCEMENT**

BAR DIA db	BEND DIAMETER d <sub>r</sub>		
	GENERAL	STIRRUPS & TIES	
		PLAIN BAR	DEFORMED BAR
6 - 20	5db	2db	4db
24 - 40	6db	-	-
24	-	3db	6db



(C) UNLESS NOTED OTHERWISE ON THE DRAWINGS THE FOLLOWING MINIMUM COVERS APPLY :

MEMBER	BELOW GROUND LEVEL		ABOVE GROUND LEVEL		
	AGAINST NATURAL GROUND	AGAINST APPROVED BOXING & BACKFILL OR SIMILAR	EXPOSED TO WEATHER & UNPLASTERED	EXPOSED TO WEATHER & PLASTERED	NOT EXPOSED TO WEATHER
FOOTINGS	75	50			
BEAM & COLUMN					
(a) PRINCIPAL REINF	75	50	50	40	40
(b) SECONDARY REINF	65	40	40	25	25
SLABS	50	40	40	20	20
WALLS	50	40	40	20	20

(D) LAPS FOR RC SLABS / BEAMS / COLUMNS  
 FORM SPLICED LAPS WITHOUT HOOKS AND LAP LENGTHS SHALL BE 65 x BAR DIA. FOR GARDE 500 STEEL 48 x BAR DIA. FOR GRADE 430 STEEL AND 32x BAR DIA FOR GRADE 300 STEELS.  
 STAGGER LAPS AS MUCH AS PRACTICABLE AND PLACE LAPS IN LOW STRESS LOCATIONS WHICH SHALL BE AS FOLLOWS:  
 PERIMETER SUPPORTS  
 \* COLUMN VERTICAL BARS WITHIN CENTER OF 1<sup>st</sup> FLOOR TO FLOOR HEIGHTS  
 \* ALLOW TO LAP WELDED WIRE MESH ONE SQUARE UND FOR RC FLOOR SLAB ON GROUND

(E) COLUMN TIES AND BEAM STIRRUPS

900-  
 \* ALL HOOKS ON STIRRUPS AND TIES MUST FIT CLOSELY AROUND MAIN BARS UND TIES & SMALL HOLES ARE NOT NECESSARILY SHOWN ON STRUCTURAL DRAWINGS.

(F) NIBS, CHASES, REBATES AND SMALL HOLES:

DETAILS

\* RAG BOLTS, HOLDING DOWN BOLTS, SLEEVES AND FIXING IN CONCRETE CAST-IN BOLTS AND FIXING MUST BE CLEANED TO THE SAME STANDARD AS REINFORCING STEEL.

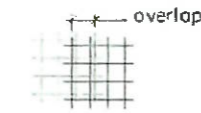
(G) STANDARD BAR CRANK

WHEN MAIN BARS ARE OFFSET, IE FOR CRANKED LAPS, THE SLOPE OF THE INCLINED PORTION OF THE BAR SHALL NOT EXCEED 1 IN 6, THUS.



(H) LAPS TO REINFORCING STEEL MESH

OVERLAP MEASURED BETWEEN OUTERMOST CROSS WIRES OF EACH FABRIC SHEET IS NOT LESS THAN THE SPACING OF CROSS WIRES PLUS 50MM, NOR LESS THAN 150MM, EXCEPT WHERE SHOWN OTHERWISE ON THE DRAWING



**5. CONCRETE**

f<sub>c</sub> = 25MPa  
 SLUMP = 65mm ± 15mm  
 f<sub>c</sub> = 17.5 MPa  
 SLUMP = 65mm ± 15mm } IN BLOCK CAVITIES

SITE MIXED CONCRETE IF APPROVED BY THE ENGINEER SHALL BE IN THE FOLLOWING PROPERTIES BY VOLUME

COARSE AGGREGATE (20mm MAX SIZE)	25MPa	20MPa	17MPa
	3	4	4
FINE AGGREGATE	1.5	2	3
CEMENT	1	1	1

**6. STRUCTURAL STEEL**

(A) STANDARDS

STEEL PLATES FOR BRACKETS SHALL CONFORM TO AS 1594  
 \* WELDING OF BRACKETS SHALL COMPLY WITH AS 1554

(B) GALVANIZING

ALL STEEL BOLTS, WASHERS, BRACKETS AND CLEATS SHALL BE HOT DIPPED GALVANIZED TO AS/NZS 4680:2006

**7. TIMBER**

VE END USE

B ALL BOLTS SHALL CONFORM TO NZS/AS 1111 AND WASHERS TO AS 1237 UNLESS OTHERWISE SPECIFIED

BOLT SIZE	SQ WASHER	ROUND WASHER
M10 OR M12	40 x 40 x 3.0	40 x 3.0
M16 OR M20	50 x 50 x 4.0	50 x 4.0

**8. ROOF**

ROOF CLADDING SHALL BE AS SPECIFIED BY THE ARCHITECT AND FIXED WITH APPROPRIATE TYPE 17 SCREWS AT CORRUGATION CENTRES AS SPECIFIED FOR CYCLONIC REGIONS BY THE MANUFACTURER, COMPLETE WITH STEEL CYCLONIC SUPPORT AND EPDM SEALING WASHERS

**9. LIGHT TIMBER FRAMING**

ALL DETAILS NOT SHOWN ON DRAWINGS SHALL BE IN ACCORDANCE WITH AS1634.3-2006 - RESIDENTIAL TIMBER FRAMED CONSTRUCTION FOR CYCLONIC AREAS

C	14-02-10	ISSUED FOR CONSTRUCTION	JY
B	0-01-10	FACILITATION OF STAGE 1 SITE PLAN	JY
A	16-10-10	SUBMISSION TO PLA AND DECP	JY
NO. X	DATE	REVISION	VFD

Rotary Club of Lautoka  
 PO Box 245  
 Lautoka, Fiji



MODEL TOWNS CHARITABLE TRUST - KOROIPIA TOWN  
 ROTAHOME CONSTRUCTION  
 GENERAL NOTES

DRAWING NUMBER  
 K2H- 002





K2H-011

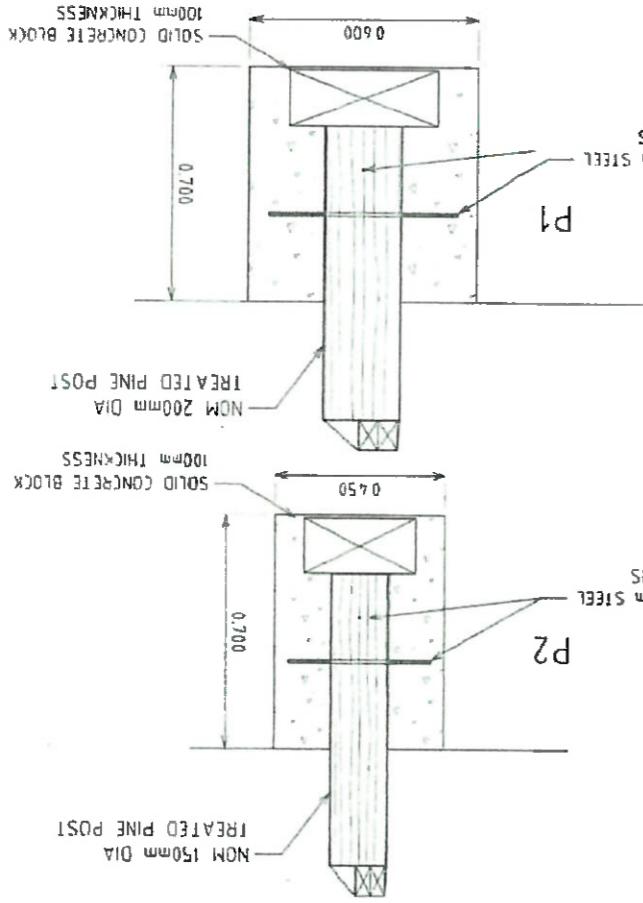
ROTAHOMI CONSTRUCTION  
FOOTING DETAIL - ROTAHOMI



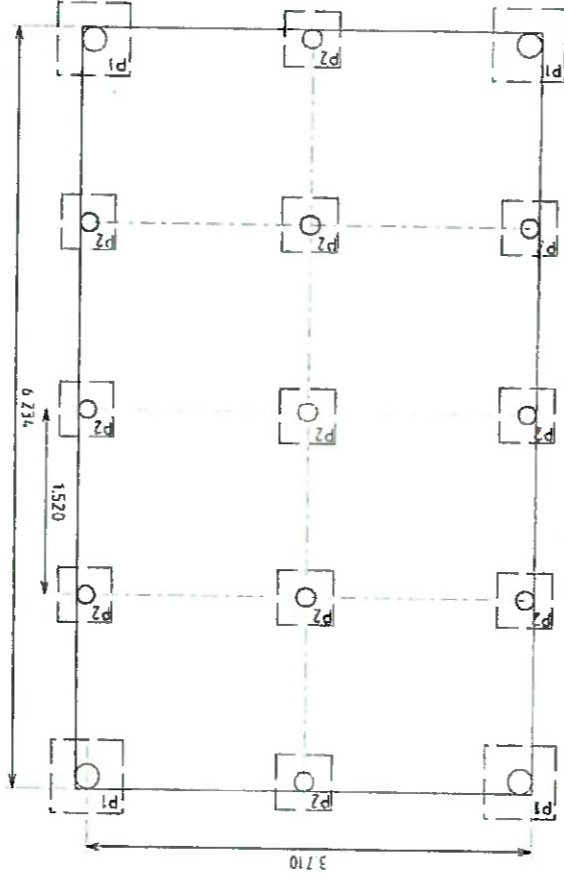
Rotary Club of Lautoka  
PO Box 245  
Lautoka, Fiji

NO.	DATE	REVISION
A	AT	ISSUED FOR CONSTRUCTION
B	AT	REVISED FOR STAGE 1 SET PLAN
C	AT	REVISED FOR STAGE 2 SET PLAN

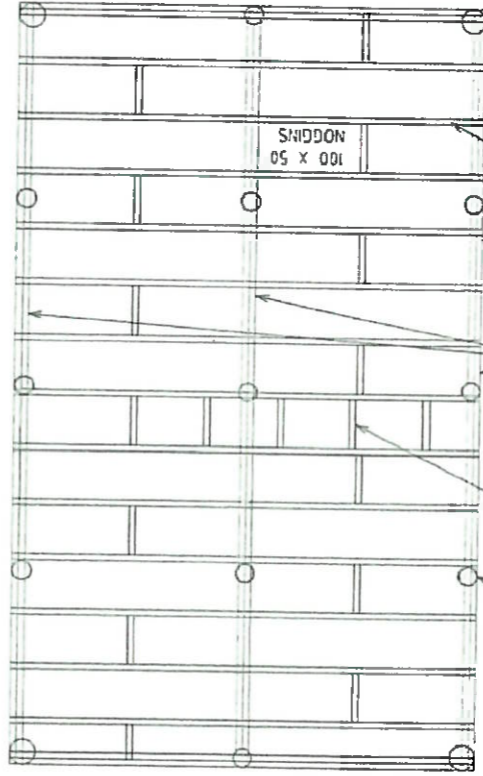
PAD FOOTING DETAIL  
NOT TO SCALE



HOUSE FOUNDATION PLAN  
SCALE 1:100 (H) (A3)

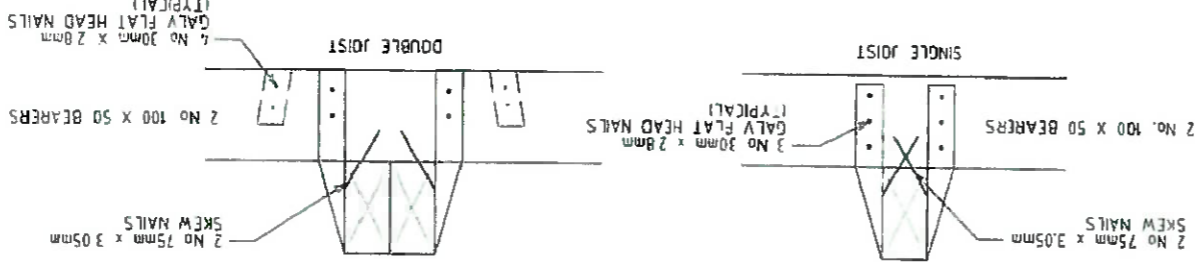


NOTES  
1. ALL JOISTS MUST BE STRAPPED TO BEARERS TO ENSURE CYCLOPE SAFETY REQUIREMENTS ARE MET.  
2. NOGGIN REQUIRED BETWEEN JOISTS EVERY SECOND SPACING TO CENTRE THE PURLIN FOR EVERY OTHER MAKE ALLOWANCE FOR ADDITIONAL NOGGIN IN VISIBLE AREAS IN DOORWAYS.

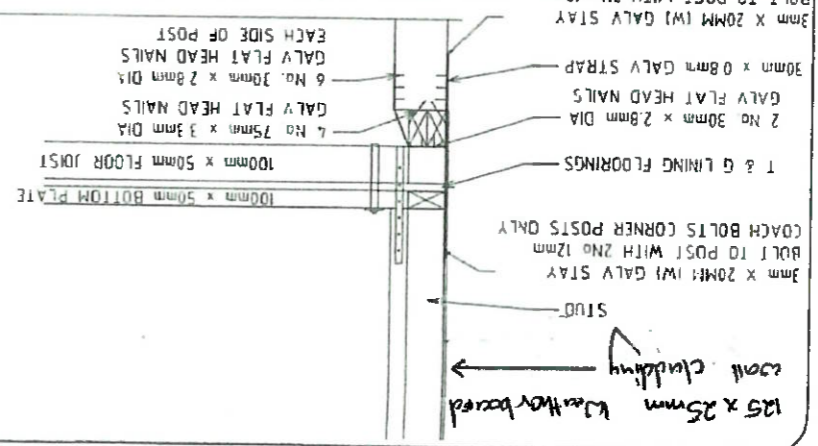


REFER RIGHT  
TREATED PINE POSTS  
NOM 100mm x 50mm  
BRIDGING PIECES AT  
MAX 600mm CENTRES TO  
FASTEN INTERNAL WALL  
REFER K2H-012 FOR  
CONNECTION DETAIL  
TWO 100 x 50mm BEARERS  
100 x 50mm FLOOR JOISTS AT 400mm CENTRES

BEARER - FLOOR JOIST CONNECTION DETAIL  
NOT TO SCALE



BEARER POST CONNECTION DETAIL  
NOT TO SCALE





K2H-013

ROTARHOME CONSTRUCTION  
SLAB DETAIL

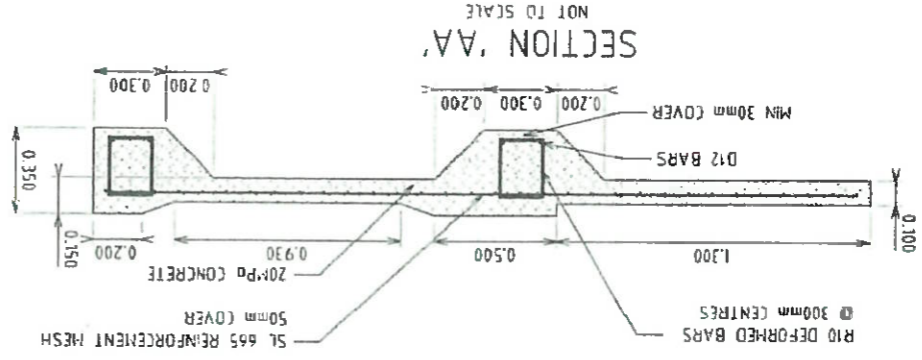
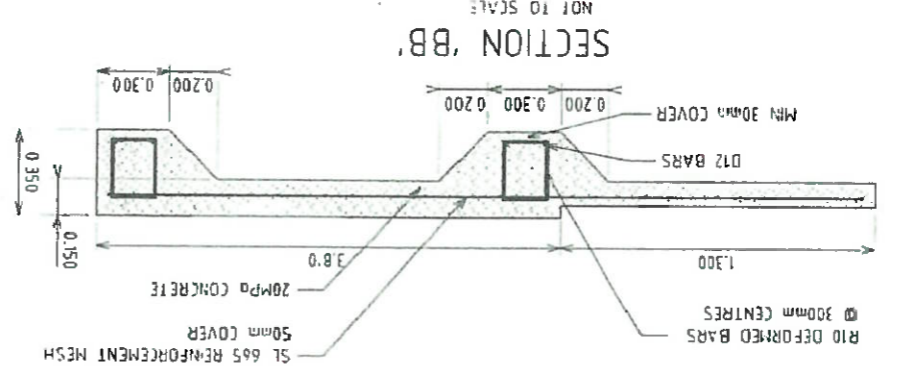
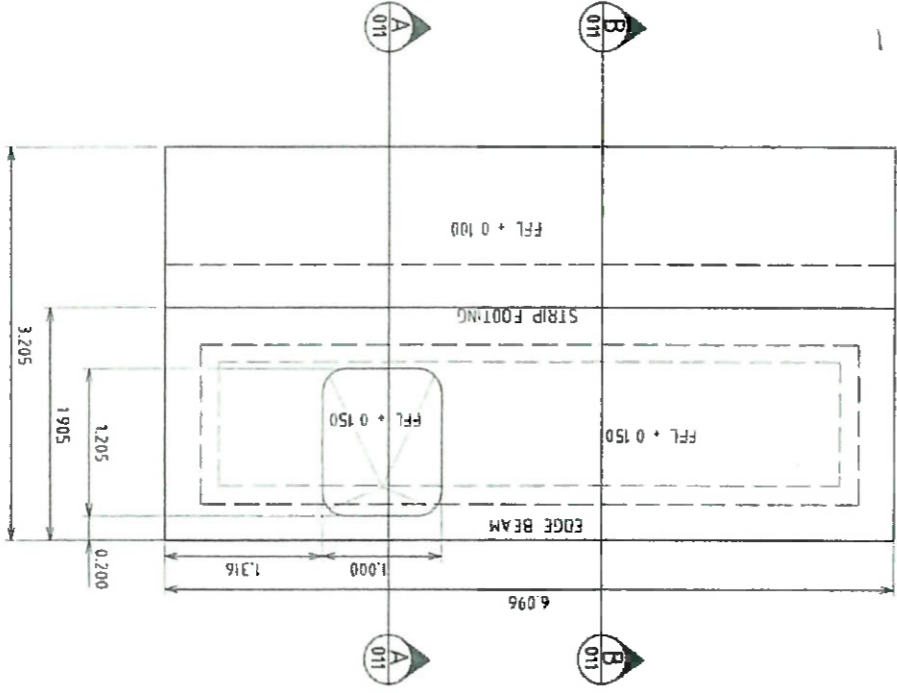
MODEL TOWNS CHARITABLE TRUST - KOROPITA TOWN



Rotary Club of Lautoka  
PO Box 245  
Lautoka, Fiji

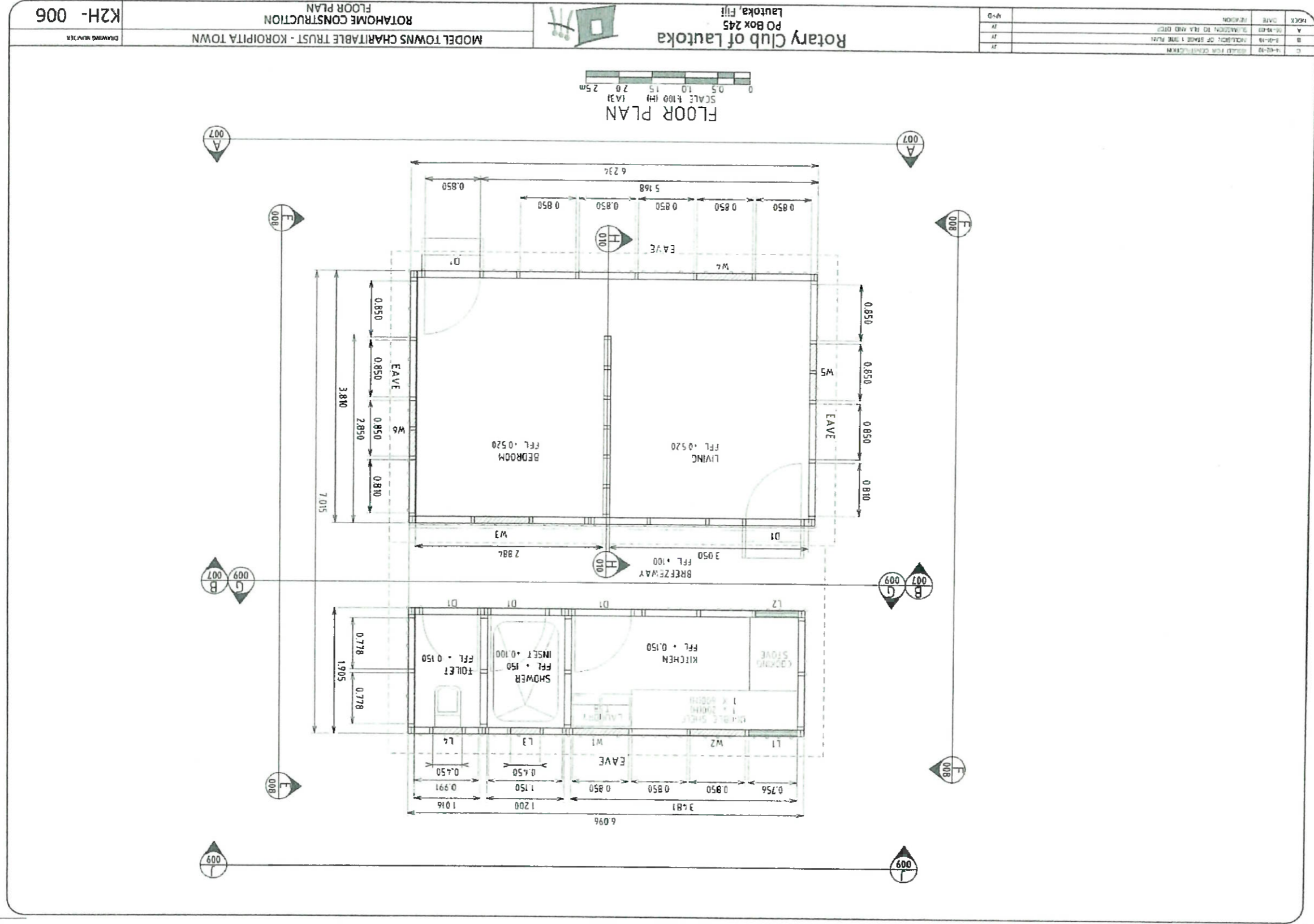
NO.	DATE	REVISION
1		ISSUED FOR TENDERS
2		FOR PRELIMINARY DESIGN
3		FOR PRELIMINARY DESIGN
4		FOR PRELIMINARY DESIGN

SLAB DETAIL - TOILET / SHOWER / KITCHEN AND BREEZEWAY



NOTES

- FOUNDATIONS HAVE BEEN DESIGN FOR AN ALLOWABLE BEARING CAPACITY OF 100 KPa FOUNDATION MATERIAL SHALL BE APPROVED FOR THIS CAPACITY BEFORE PLACING CONCRETE
- FOR ALL SLABS ON GROUND, ALL TOP SOIL AND UNSUITABLE MATERIAL (AS DETECTED BY THE SUPERVISING ENGINEER) SHALL BE REMOVED AND REPLACED BY APPROVED FILL
- ALL FILL MUST BE COMPACTED IN LAYERS NOT EXCEEDING 200mm TO NOT LESS THAN 95% OF THE DENSITY DETERMINED IN AS 1289.5.11 (STANDARD COMPACTIVE EFFORT) AT A MOISTURE CONTENT BETWEEN 90 AND 105% OF OPTIMUM MOISTURE CONTENT.





MODEL TOWNS CHARITABLE TRUST - KOROPITA TOWN

ROTAROME CONSTRUCTION

ELEVATIONS AND STUD WALL DETAILS

Rotary Club of Lautoka

P.O. Box 245

Lautoka, Fiji

NO.	DATE	REVISION
1		
2		
3		
4		
5		

SCALE 1:100 (M)

SECTIONS

**ELEVATION AA**

20mm dia treated steel bolts at corners - 900mm spacing

WALL CLADDING

WINDOW OPENING TO BE CUT OUT AFTER FASTENING

ROOF CLADDING QUANT - 9MT

**STUD WALL DETAIL A**

15mm dia treated steel bolts

100mm x 50mm BEARERS

100mm x 50mm JOISTS

STRAPPING WITH 13mm x 0.8mm GALV STRAPPED TO BEARERS

STUD SPACE DETAIL

300mm GAP

15mm dia treated steel bolts

20mm dia treated steel bolts at corners - 900mm spacing

F.L. +0.00

DOUBLE WIRE @ END (TYPICAL)

300mm OVERLAP GALVANIZED STRAP

300mm x 0.8mm GALVANIZED STRAP

0.700

0.700

0.600

0.850

0.850

0.850

0.850

0.850

0.850

0.850

5.168

0.930

**ELEVATION BB**

SUPPORT BLANK FOR ROOF FROM LOLET / SHOWER / KITCHEN

125 x 25mm weather board wall cladding

FOR WINDOWS AND DOOR DETAIL

REFER SHEET K2H-012 FOR STUD SPACE DETAIL

REFER SHEET BRACKS DETAIL

REFER SHEET K2H-012 FOR STUD SPACE DETAIL

100mm x 50mm BEARERS

100mm x 50mm JOISTS

STRAPPING WITH 13mm x 0.8mm GALV STRAPPED TO BEARERS

STUD SPACE DETAIL

300mm GAP

15mm dia treated steel bolts

20mm dia treated steel bolts at corners - 900mm spacing

F.L. +0.00

DOUBLE WIRE @ END (TYPICAL)

300mm OVERLAP GALVANIZED STRAP

300mm x 0.8mm GALVANIZED STRAP

0.700

0.700

0.600

0.850

0.850

0.850

0.850

0.850

0.850

5.168

0.930

2.957

1.280

0.580

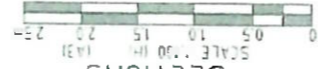
0.600



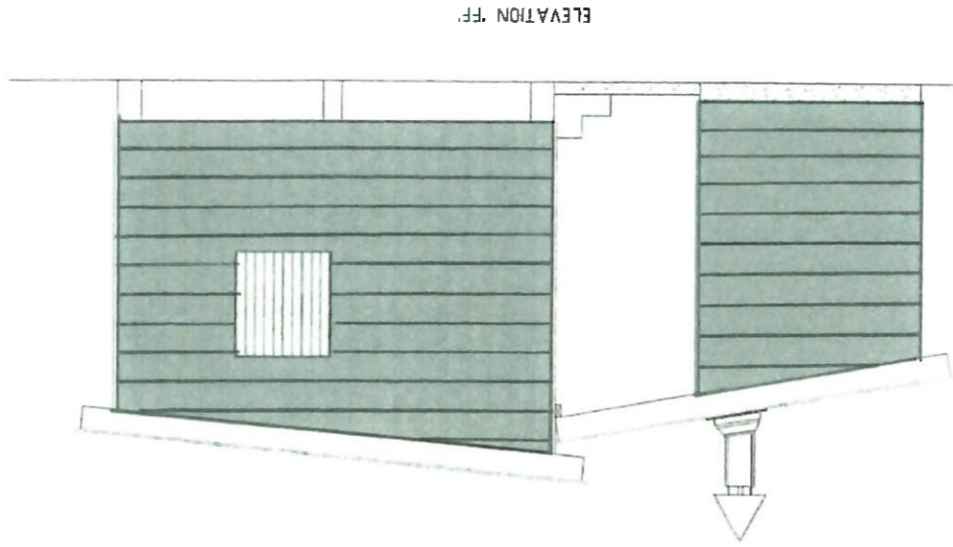
K2H-008

MODEL TOWNS CHARITABLE TRUST - KOROPITA TOWN  
ROTATION AND STUD WALL DETAILS

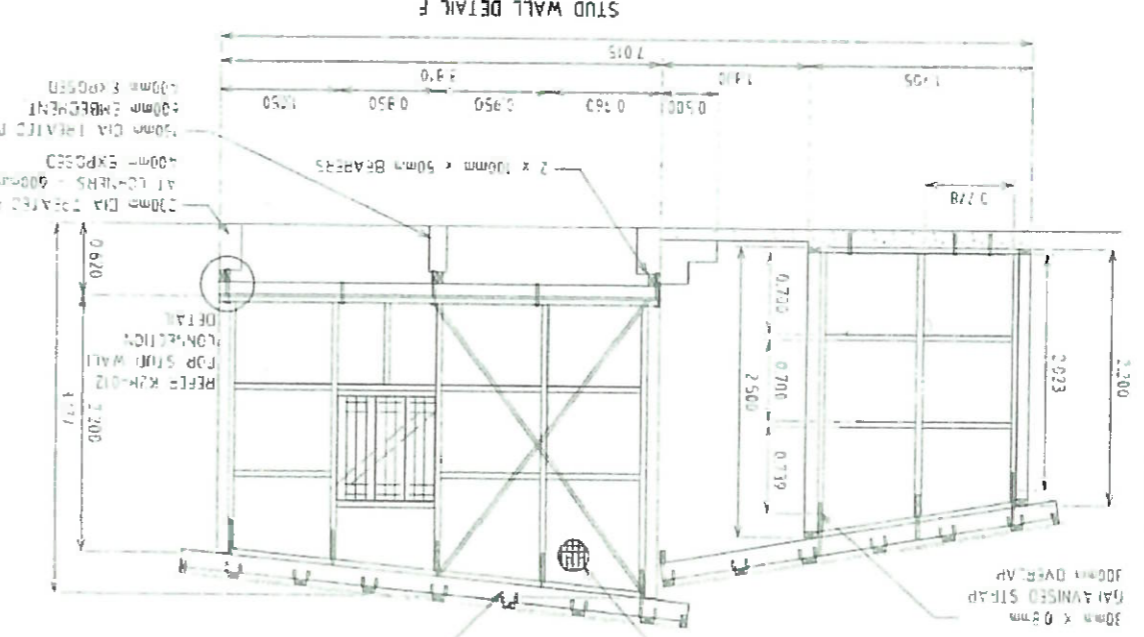
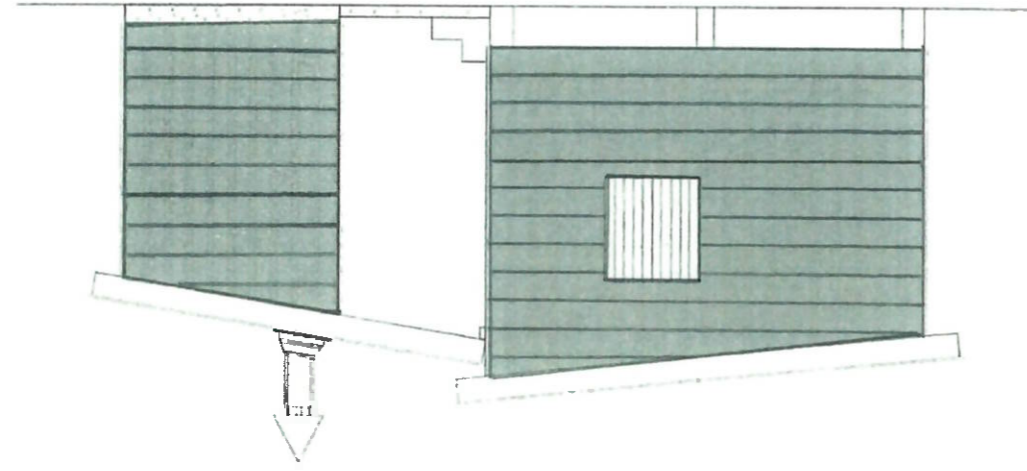
Rotary Club of Lautoka  
PO Box 245  
Lautoka, Fiji



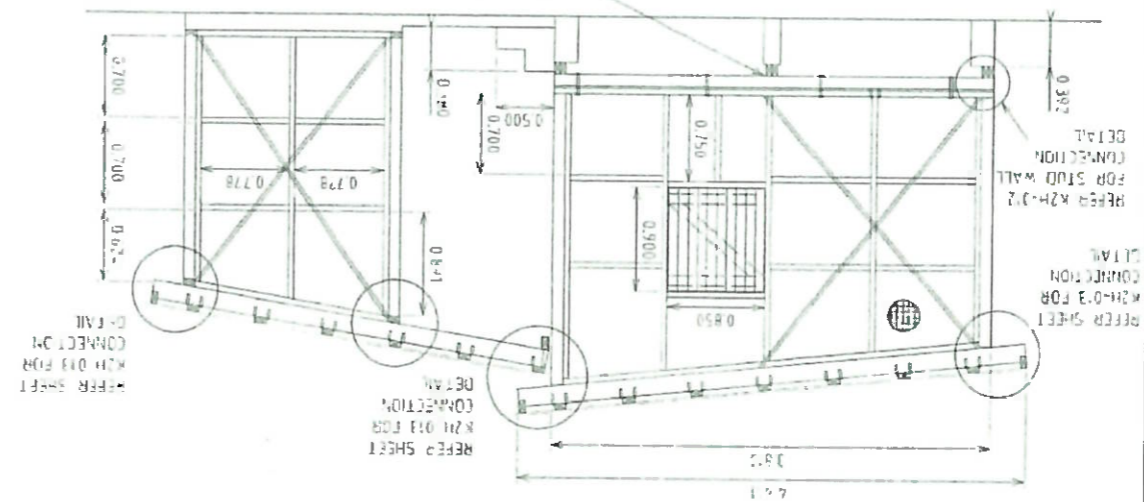
SECTIONS



ELEVATION FF



STUD WALL DETAIL F



STUD WALL DETAIL E

NO.	REVISION	DATE
1		
2		
3		
4		

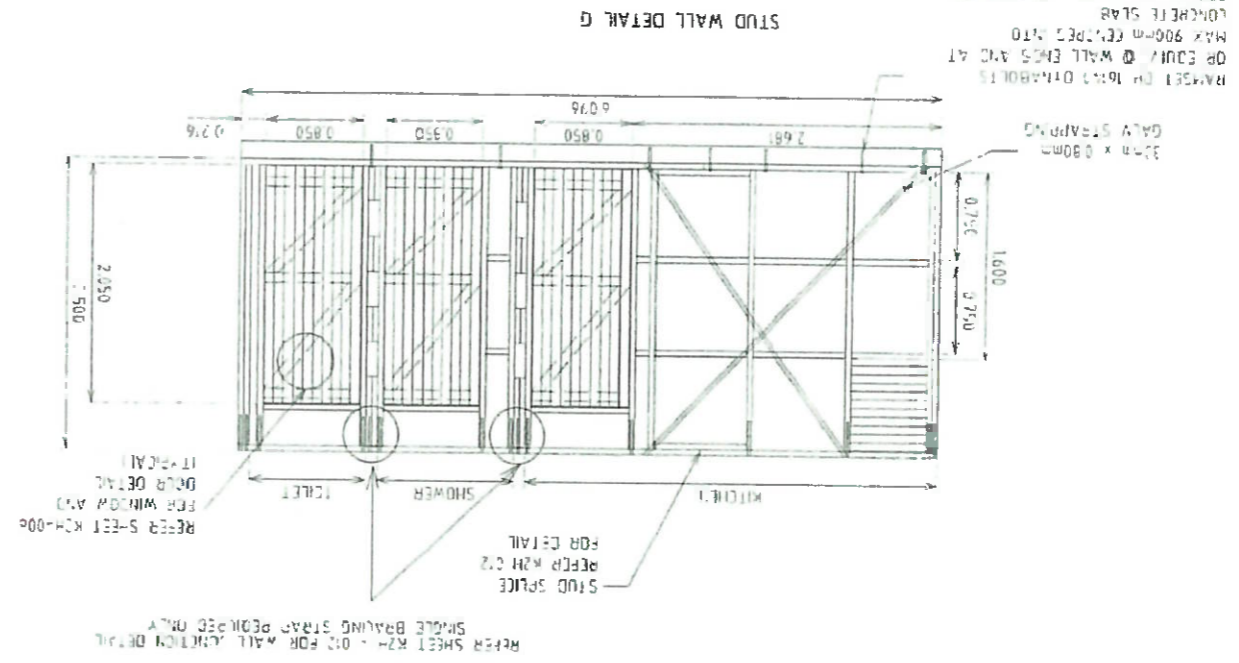
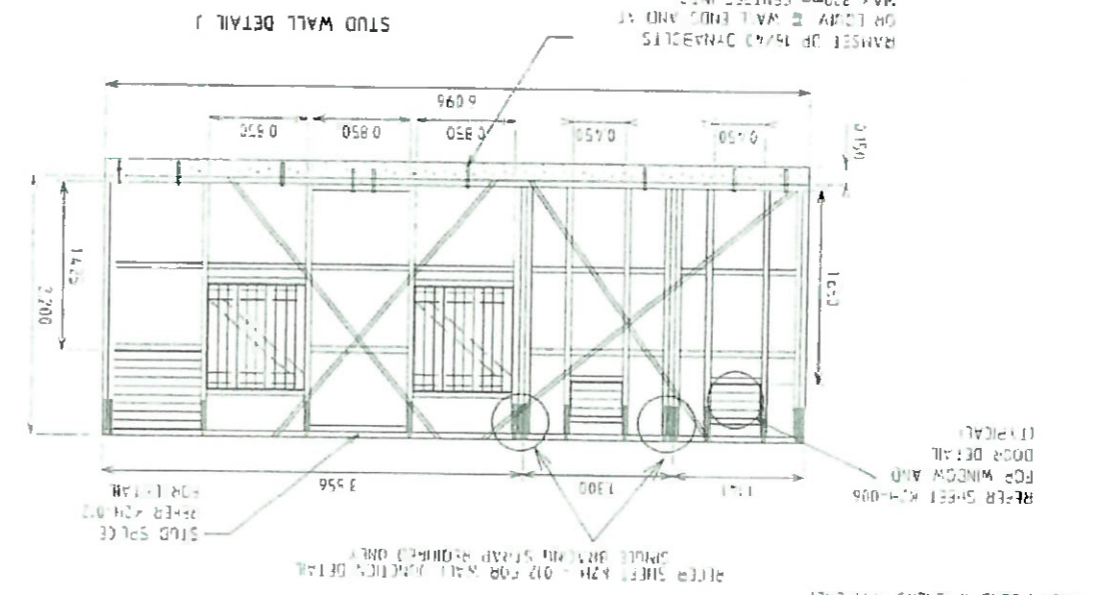
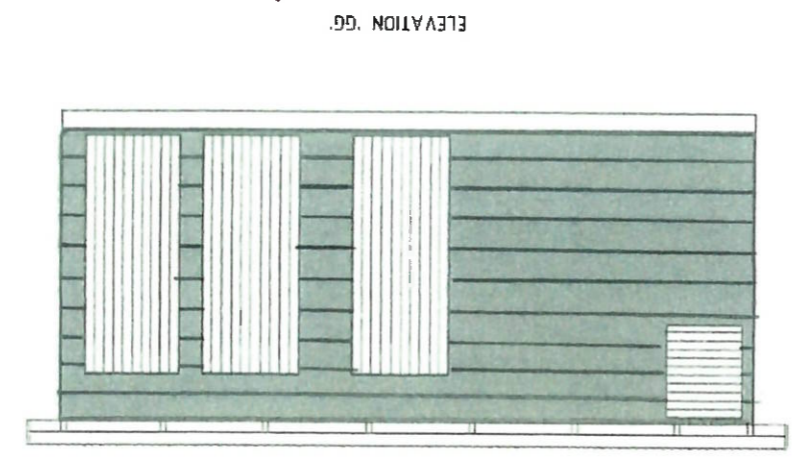
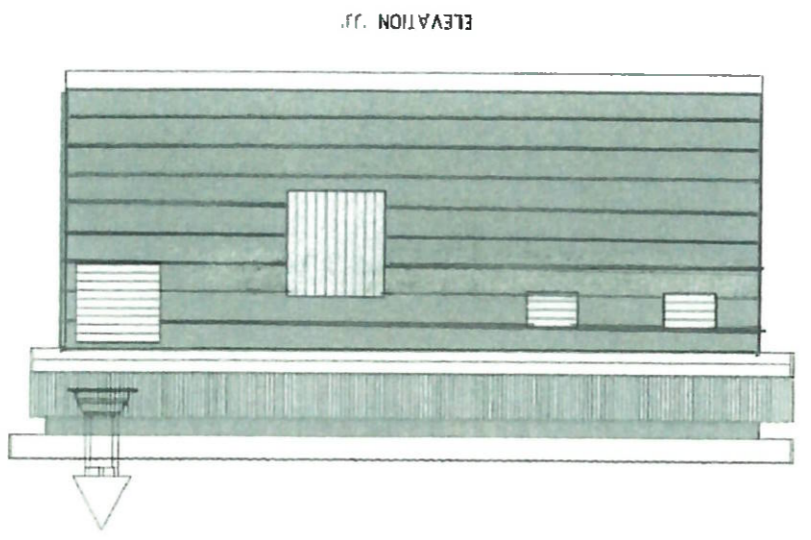
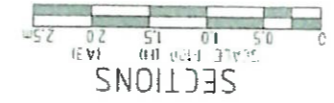


NO.	DATE	DESCRIPTION
1		ISSUED FOR CONSTRUCTION
2		REVISION FOR WALL & BRIDGE
3		REVISION FOR WALL & BRIDGE
4		REVISION FOR WALL & BRIDGE

Rotary Club of Lautoka  
PO Box 245  
Lautoka, Fiji

MODEL TOWNS CHARITABLE TRUST - KOROPITA TOWN  
ROTAHOME CONSTRUCTION  
ELEVATIONS AND STUD WALL DETAILS

KZH-009



REFER SHEET R2H - 012 FOR WALL JUNCTION DETAIL  
REFER SHEET BAYING STAIRS REQUIRED ONLY

REFER SHEET KZH-006  
FOR WINDOW AND  
DOOR DETAIL  
(IF EQUAL)

STUD SPACE  
REFER R2H 012  
FOR DETAIL

32mm x 80mm  
GALV STEEL STUDS





K2H-010

ROTARHOMIE CONSTRUCTION  
INTERNAL STUD WALL SECTION AND ROOF CONNECTION DETAIL

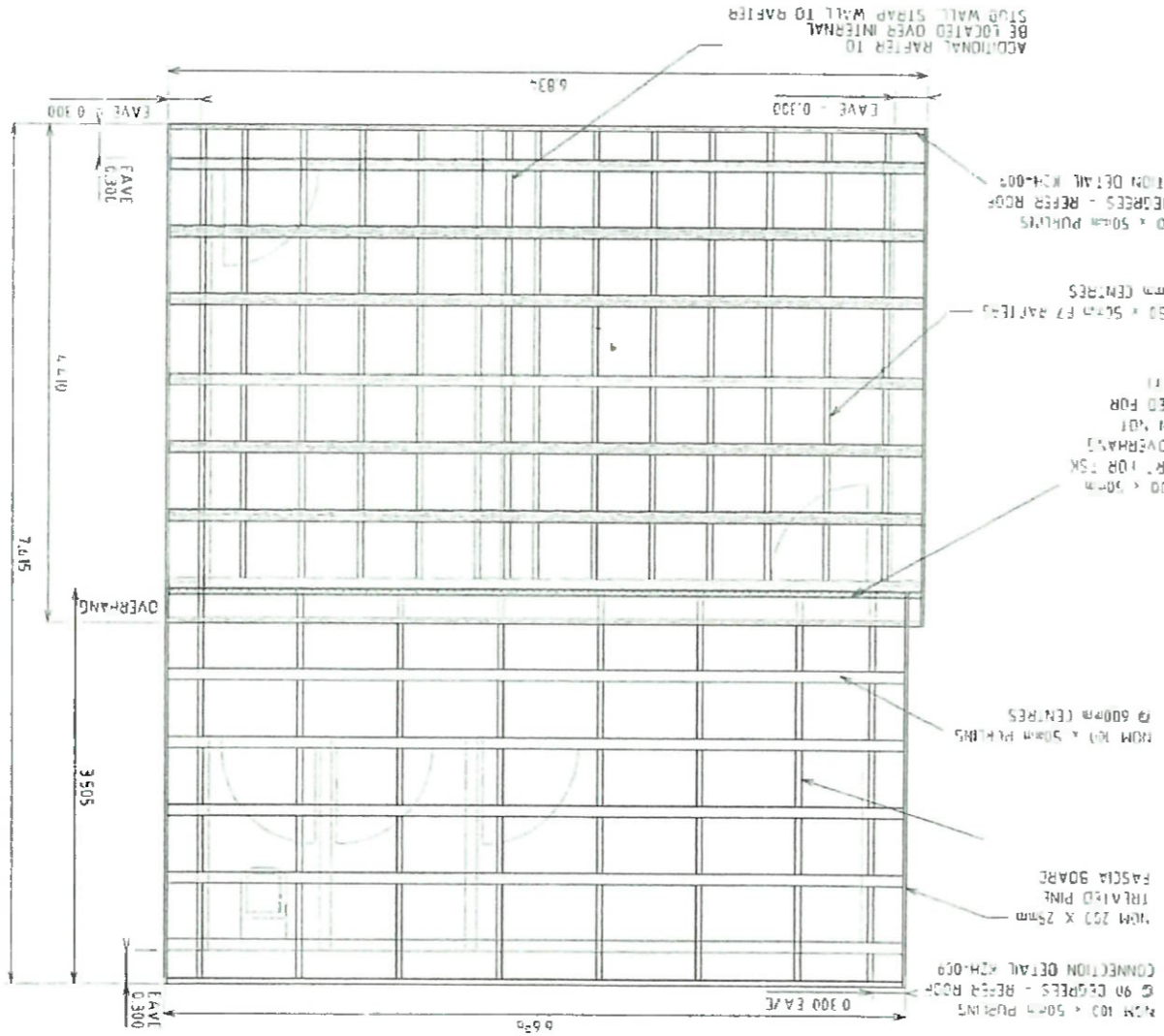
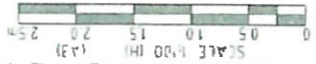


Rotary Club of Lautoka  
PO Box 245  
Lautoka, Fiji

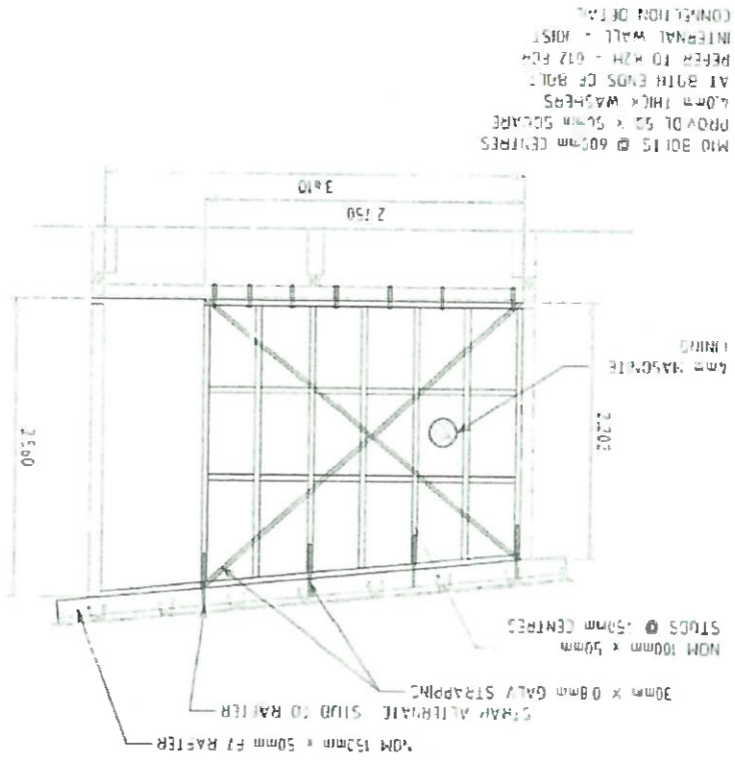
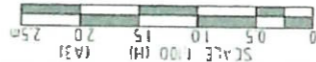
MODEL TOWNS CHARITABLE TRUST - KOROPITA TOWN

NO.	REVISION	DATE	BY
1	ISSUED FOR CONSTRUCTION		
2	FOR APPROVAL		
3	FOR APPROVAL		
4	FOR APPROVAL		

ROOF FRAMING PLAN



INTERNAL STUD WALL SECTION HH





K2H-012

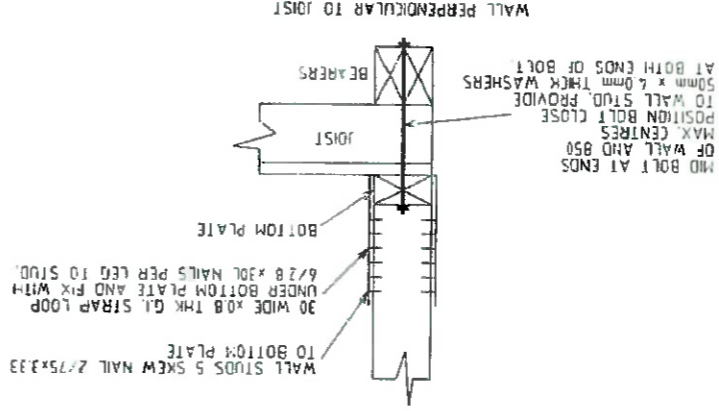
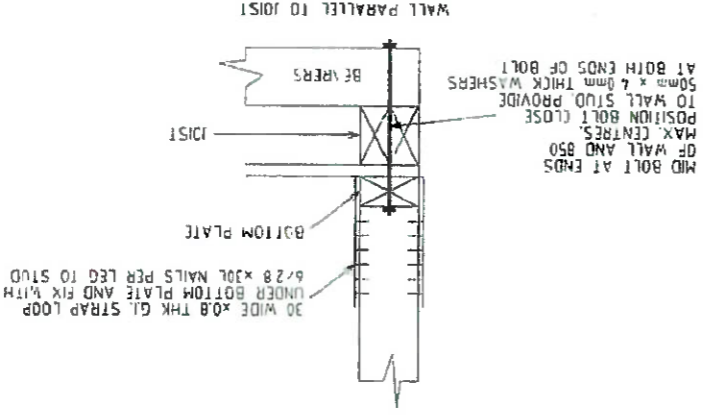
MODEL TOWNS CHARITABLE TRUST - KOROIPITA TOWN  
 ROTAHOME CONSTRUCTION  
 STRUCTURE WALL CONNECTION DETAILS



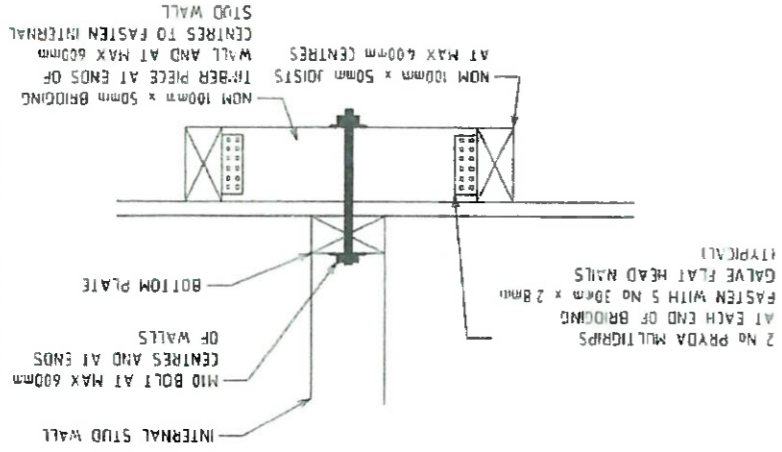
Rotary Club of Lautoka  
 PO Box 245  
 Lautoka, Fiji

NO.	DATE	REVISION
1		ISSUED FOR CONSTRUCTION
2		REVISION TO BE MADE
3		REVISION TO BE MADE
4		REVISION TO BE MADE

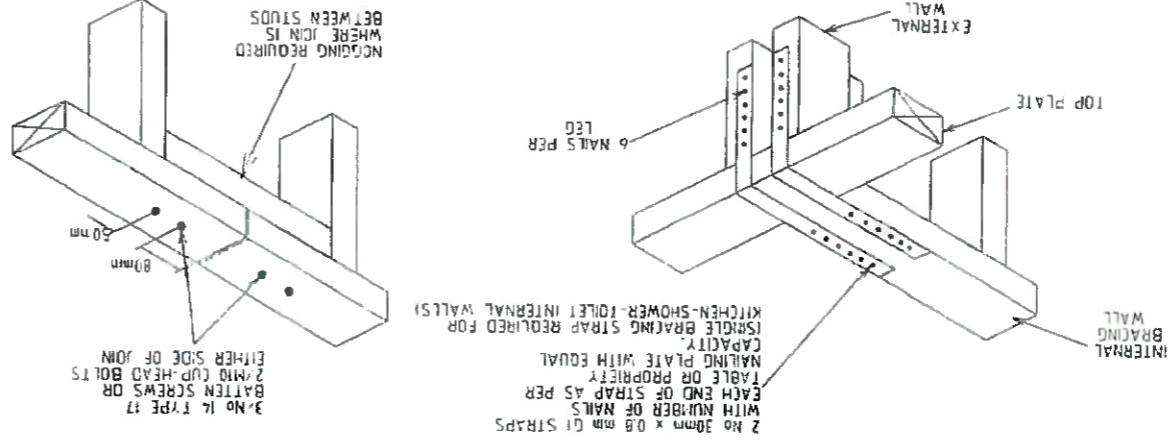
STUD - JOIST - BEARER CONNECTION DETAIL  
 NOT TO SCALE



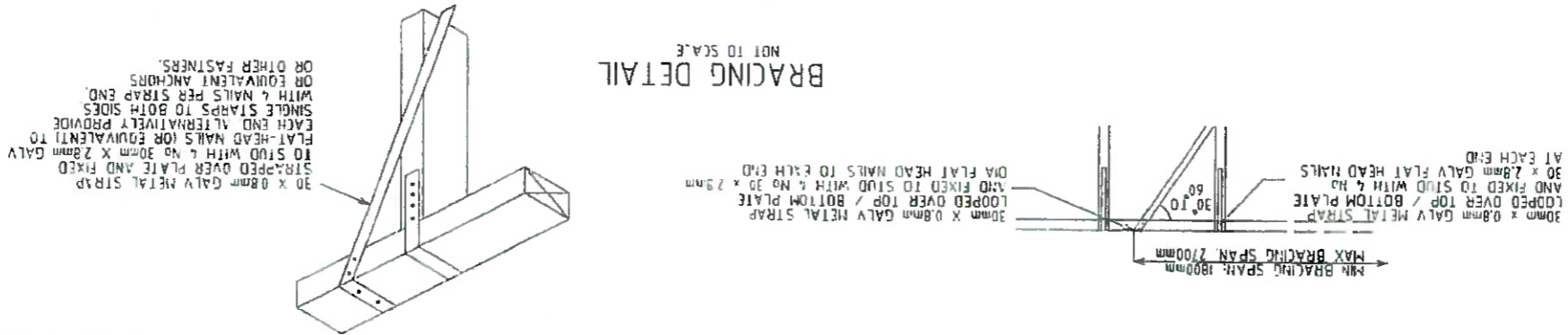
INTERNAL WALL - JOIST CONNECTION  
 NOT TO SCALE

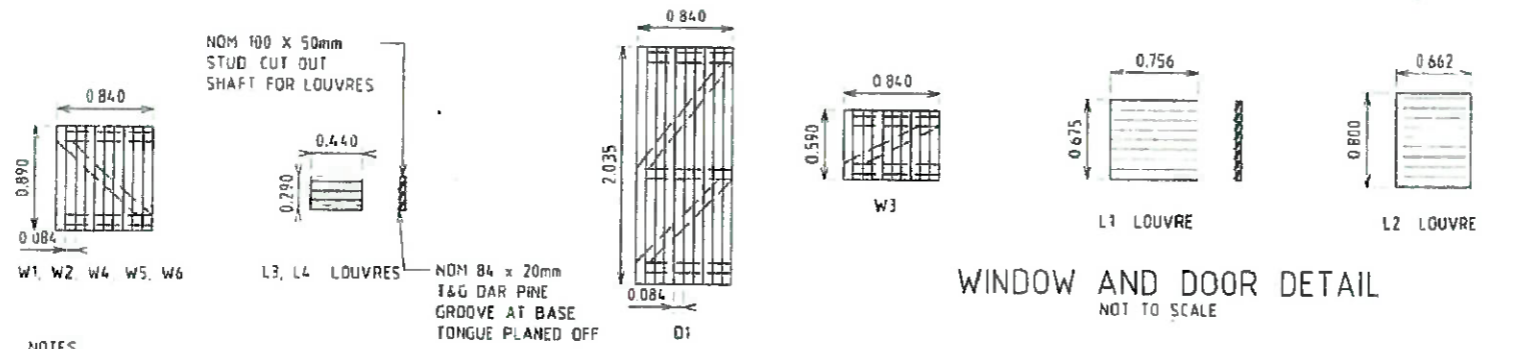


WALL JUNCTION DETAIL  
 NOT TO SCALE



BRACING DETAIL  
 NOT TO SCALE

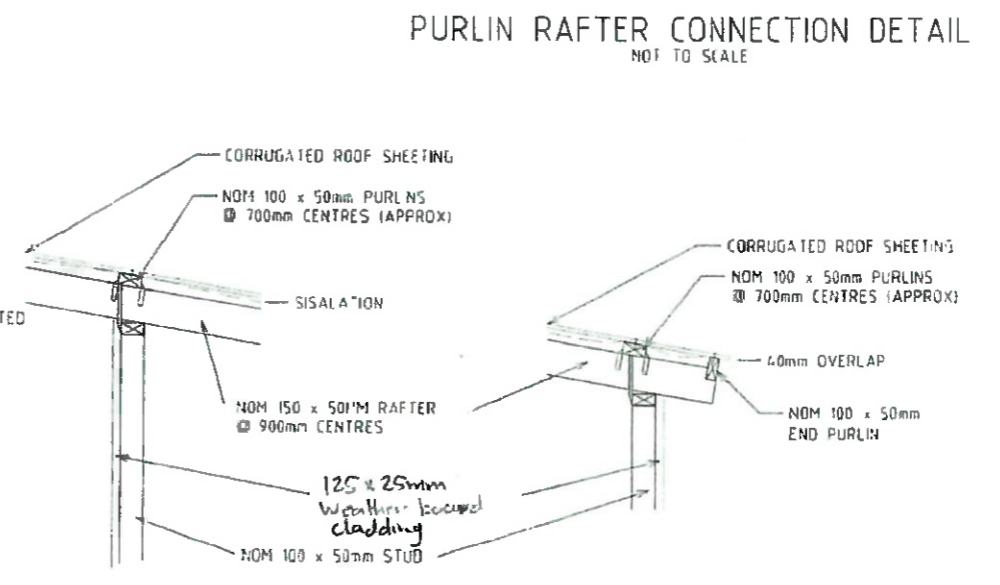
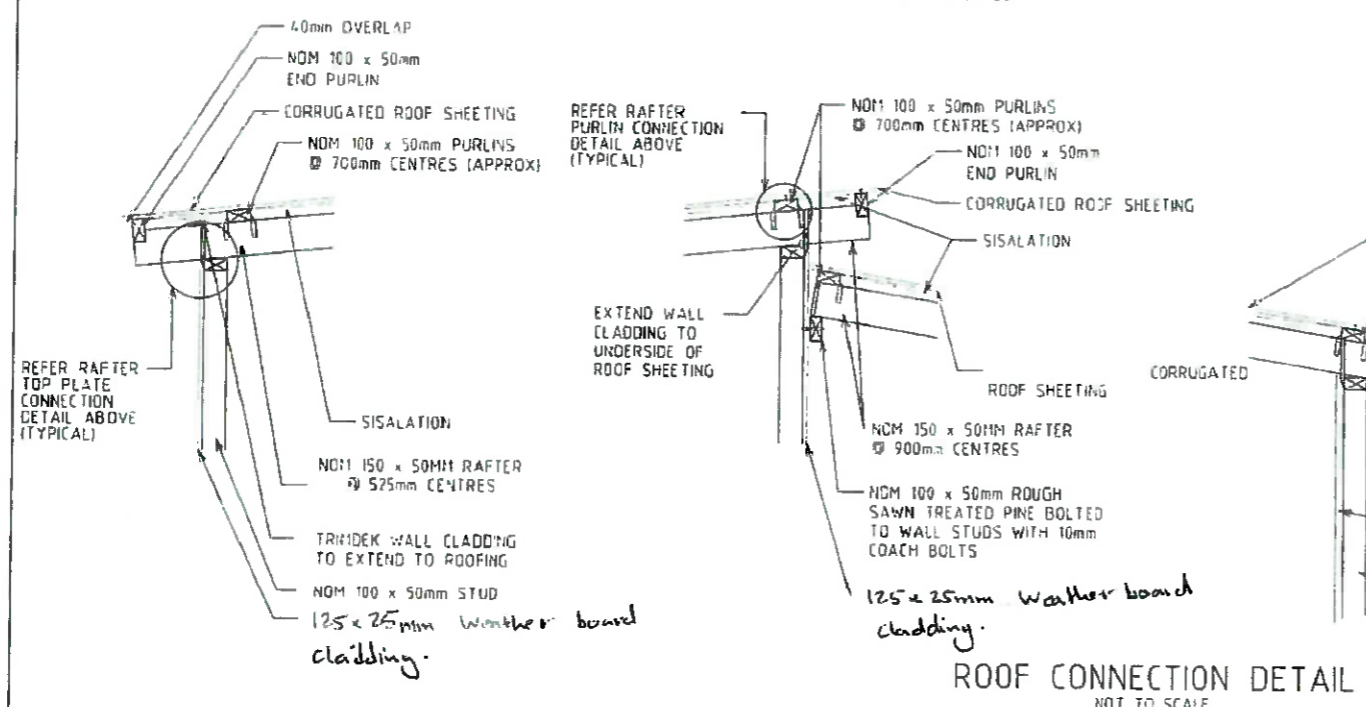
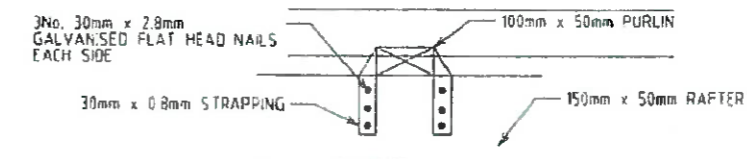
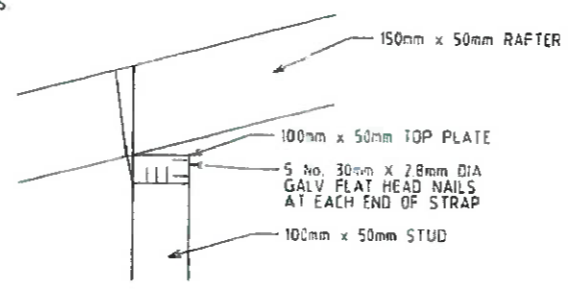




- NOTES
1. WINDOW/DOOR SIZES TO BE CONFIRMED ON SITE PRIOR TO FABRICATION OF WINDOW/DOOR FRAMES.
  2. REFER FLOOR PLAN FOR DOOR SWING PRIOR TO FABRICATION OF DOOR FRAMES.
  3. PROVIDE 5mm CLEARANCE BETWEEN EDGE OF DOOR/WINDOW AND FRAME.
  4. DOORS/WINDOWS TO BE PAINTED ROTARY YELLOW.
  5. FIT 200mm PABBOLTS TO ALL DOORS AND WINDOWS.

DOOR/WINDOW SCHEDULE

TYPE	LOCATION	QUANTITY
W1	KITCHEN	1
W2	KITCHEN	1
W3	HOUSE WALKWAY	1
W4	HOUSE LONG SIDE	1
W5	HOUSE SHORT SIDE	1
W6	HOUSE SHORT SIDE	1
D1	DOOR	5
L1	KITCHEN - EXTERNAL	1
L2	KITCHEN - WALKWAY	1
L3	SHOWER	1
L4	TOILET	1



NO.	DATE	REVISION	APPD
C	14-09-10	ISSUED FOR CONSTRUCTION	JW
B	10-01-10	INCLUSIVE OF STAGE 1 LINE PLAN	JW
A	10-10-09	SUBMISSION TO RLA AND STEP	JW

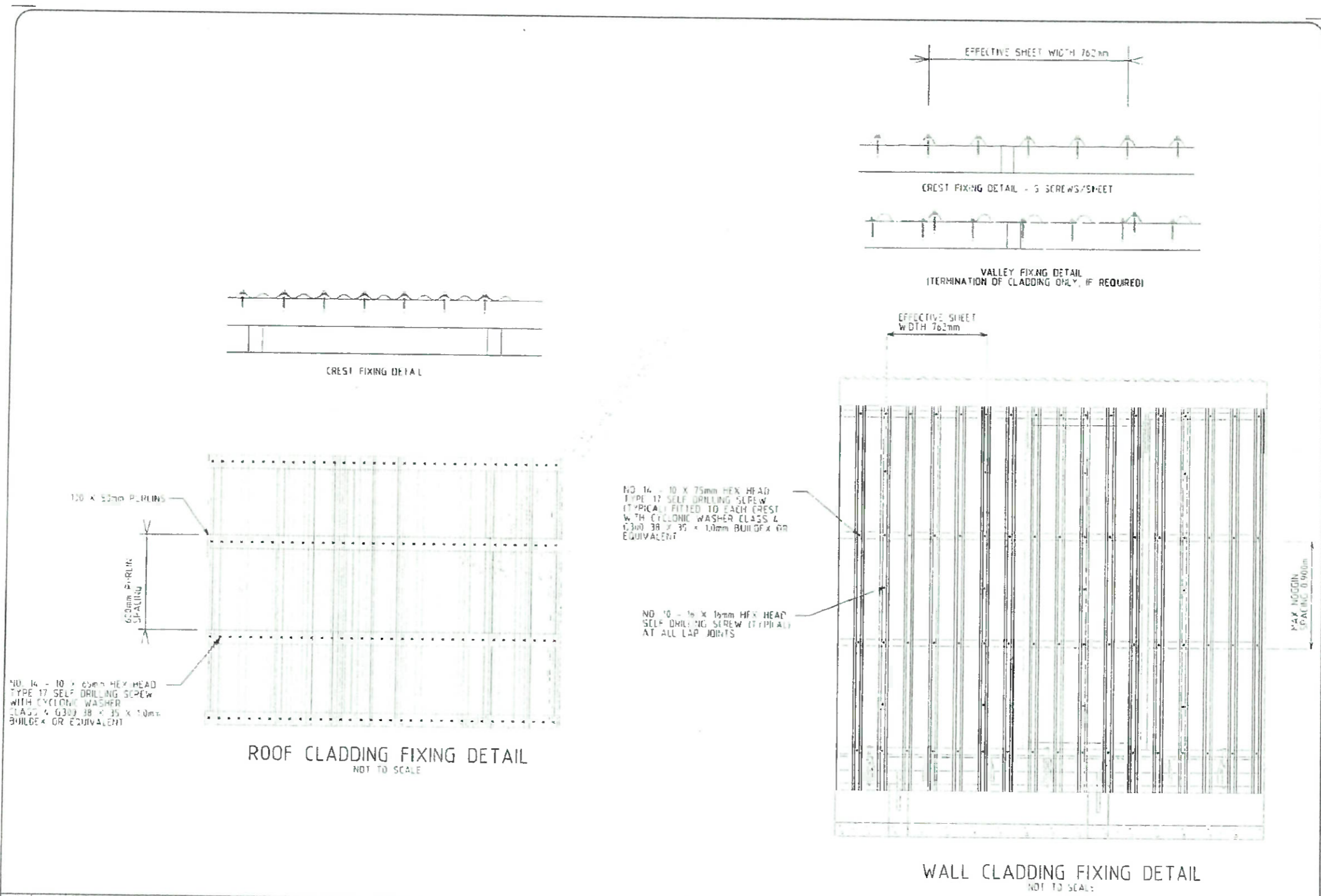
Rotary Club of Lautoka  
PO Box 245  
Lautoka, Fiji



MODEL TOWNS CHARITABLE TRUST - KOROIPIA TOWN  
ROTAHOME CONSTRUCTION  
DOOR, WINDOW AND ROOF CONNECTION DETAIL

DRAWING NUMBER  
K2H- 014





REV	DATE	REASON	BY	APPD
B	04-04-18	ISSUANCE OF STAGE 1 SITE PLAN	JP	
A	06-06-18	SUBMISSION TO RLA AND DEPT	JP	
NO 1				

Rotary Club of Lautoka  
PO Box 245  
Lautoka, Fiji

MODEL TOWNS CHARITABLE TRUST - KOROIPITA TOWN  
KOROIPITA MODEL TOWNS TRUST  
CLADDING FIXING DETAIL

DRAWING NUMBER  
K2H- 016



TWO BEDROOM TIMBER HOUSE			
NO	ITEM DESCRIPTION	QTY	UNIT
	<b>Substructure</b>		
1	Cement x 40kg	53	bags
2	19mm Aggregate	7	m3
3	Fine Sand	4	m3
4	200 x 25mm boxing timber	17	m
5	150 micron polythene DPC Visqueen	2	roll
6	12mm deform bars	13	lgths
7	10mm round bars	13	lgths
8	20 x 8 x 665 mesh	1	shts
9	25kg Black Binding Wire	1	kg
	<b>Pad Footing</b>		
10	Cement x 40kg	8	bags
11	19mm Aggregate	1	m3
12	Fine Sand	0.5	m3
13	150dia. X 1200 TRT Pine Posts	11	no
14	200dia. X 1200 TRT Pine Posts	4	no
15	100 x 50 bearers 6/6.234m	37.8	m
16	100 x 50 timber floor joists 17/3.71	65	m
17	30mm x 0.8mm galv. Strapping	3	coil
18	30mm x 2.8mm galv. Flathead nails	234	no
19	75mm x 3.3mm galv. Flathead nails	48	no
20	100 x 50 timber floor nogging	8	m
21	100 x 25 T&G Flooring	310	m
	<b>Floor to beam</b>		
22	100 x 50 stud pine 50/2.6m	130	m
23	100 x 50 stud pine 13/2.2m	29	m
24	100 x 50 timber nogging	71	m
25	100 x 50 top and bottom plate	72	m
26	M10 x 130mm galv. Cuphead bolt & nuts c/w washer	56	no
27	M16 x 140mm dyna bolt & washer	22	no
28	30m strapping	5	coil
	<b>Galv. Jolthead nail</b>		
29	30mm x 3.15mm galv. Clout nails	4	kg
30	75 x 3.75mm	5	kg
31	100 x 4.5mm	5	kg
32	125 x25 treated weatherboard wall lining	83	m2
33	50 x 2.5mm	6	kg
34	100 wide DPC membrane	16	no
	<b>Partition</b>		
35	100 x50 stud 13/2.6m	34	m
36	100 x 50 nogging	15	m
37	100 x 50 top and bottom plate	15	m

38	M10 x 130mm galv. Cuphead bolt & nuts c/w washer	16	nos
	<b>Galvanised Jolt Head Nails</b>		
39	75 x 3.75mm	2	kg
40	100 x 4.5mm	2	kg
41	2400 x 1200 x 6mm interior ply	4	m
42	2400 x 1200 x 6mm cement board	4	m
43	19mm panel pins	3	kg
	<b>Doors and Window</b>		
44	145 x 65 dress window sill	8	m
45	150 x 45 dress head	8	m
46	20 x 12 dress window stopper	16	sht
	<b>Timber frame ledge and brace window including hardware and fixing, opening size 840 wide x 890 high. Include for paint finish (W1, W2, W3, W4, W5 &amp; W6) 5sets</b>		
47	125 x25 T&G pine lining 35/.890mm	32	m
48	150 x 25 H3 treated timber	13	m
49	Butt Hinges 6"	5	prs
50	100mm chrome plated cabin hook	5	no
	<b>Timber frame ledge and brace window including hardware and fixing, opening size 840 wide x 590 high. Include for paint finish (W3) 1set</b>		
51	125 x25 T&G pine lining 21/.238m	5	m
52	150 x 25 H3 treated timber	3	m
53	Butt Hinges 6"	1	prs
54	100mm chrome plated cabin hook	1	nos
	<b>Louver frame (Naco louver frame) c/w screws</b>		
55	3 blade louver frame	2	prs
56	5 blade louver frame	1	prs
57	6 blade louver frame	1	prs
58	Clear louver blade (610mm x 152mm)	17	no
	<b>Doors</b>		
	<b>Timber frame ledge and brace window including hardware and fixing, opening size 840 wide x 2030 high. Include for paint finish (D1) 3set</b>		
59	125 x25 T&G pine lining 21/.238m	43	m
60	20 x 12 dress window stopper	15	m
61	150 x 25 H3 treated timber	14	m
62	Butt Hinges 6"	1	prs
63	Mortice Lock	3	nos
	<b>Sink bench unit and wall mounted shelve</b>		
64	100 x 25 dress H3 Pine (Kick Board)	18	
65	75 x 25 Dress treated pine	42	
66	2400 x 1200 x 18 MDF Board for bench top	1	



67	2400 x 1200 x 19mm exterior ply	1	1	sht
68	2400 x 1200 x 18 MDF Board for cupboard and doors	1	1	sht
69	50mm brush butt hinges c/w screws	4	4	prs
70	wooden D pull handle for cupboard and doors	4	4	nos
71	50mm galv nails	1	1	kg
72	75mm galv. Nails	1	1	kg
73	200 x 25 dress treated h3 pine for wall mounted shelve	9	9	m
74	Door Catcher	4	4	nos
	<b>Roof</b>			
75	100 x 50 timber purlin	114	114	m
76	150 x 50mm timber rafter 8/3,8,13/4,2	85	85	m
77	250 x 25mm fascia board	33	33	m
78	25 x 1.2mm galv. Strap	2	2	coil
79	30 x 3.15 dia bugle headed nails	5	5	kg
80	Custom Orb corrugated roofing 0.48 BMT 4.5m long	10	10	shts
81	Custom Orb corrugated roofing 0.48 BMT 3.5m long	10	10	shts
82	Flashing in 2 metre length	10	10	leng
83	lolt head galv. Nails 100mm	5	5	kg
84	lolt head galv. Nails 75mm	5	5	kg
85	lolt head galv. Nails 50mm	2	2	kg
86	Neoprene washers to ditto in 250 per pkt	2	2	pkt
87	Double sided sisalation thermo bar 344 fire retardant light diffuser insulation - 30m roll	2	2	roll
88	Type 7 cyclone screws in 250/pkt	2	2	pkt
	<b>Toilet Fitting</b>			
89	PiPan c/w cistern , seat and cover	1	1	set
90	100mm PVC wastepan connector	1	1	nos
91	Pan toilet 'P' trap	1	1	nos
92	100mmx90 PVC junction	5	5	nos
93	PVC inspection bend	2	2	nos
94	100mm PVC waterpipe in 6m length	2	2	leng
95	150ml solvent glue	1	1	nos
96	100mm vent cowl	1	1	nos
97	100mm PVC clip	6	6	nos
98	D/bowl conc. Washtub	1	1	nos
	<b>Bathroom</b>			
99	Shower rose 12mm x 150mm	1	1	nos
100	12mm PVC pipe in 6m length	2	2	leng
101	12mm PVC Faucet Socket	2	2	nos
102	12mm Valve socket	2	2	nos
103	12mm WC stop cock	3	3	nos
104	12mm PVC elbow	4	4	nos
105	12mm PVC Tee	1	1	nos
106	Vanity cupboard c/w fittings	1	1	nos
107	75mm floor gratings	1	1	nos
108	12mm brass stop cock	2	2	nos

109	12mm sink tap c/w fittings	4	4	nos
	<b>Electrical</b>			
110	Main switc board complete	1	1	nos
111	One way switch	5	5	nos
112	Double power outlet	8	8	nos
113	1200 single led light and frame	6	6	nos
114	approved led down lights	2	2	nos
115	Light Wire	30	30	nos
116	Switch Wire	30	30	m
	<b>Paint</b>			
117	4 litre pink primer	5	5	nos
118	4 liter enamel undercoat	5	5	nos
119	4liter finishing coat	5	5	nos
120	1 liter cernestic	1	1	gall
121	4 liter turpentine	1	1	gall
122	Roller tray	1	1	nos
	<b>Paints brushes</b>			
123	100mm	2	2	nos
124	75mm	2	2	nos
125	50mm	2	2	nos
126	roller handle	1	1	nos
127	Roller sleeves	2	2	nos

